

OFFICERS & STAFF

Georgia District Director

Rick & Rhonda Stephens
stephensrick@bellsouth.net

770.562.3277 cell:404.245.0496

Asst. District Directors

Recruitment & Retention

Rally Coordinator

Dolly & Bill Chatel-Dodd
D95magenta@bellsouth.net
blackwingbill@bellsouth.net

678.230.7884

Asst. District Directors/Trainers

Gary & Linda Feaselman
wingrider@gbonline.com
770.474.6834

Asst. District Directors

Rally Vendor Coordinators

Ron & Susan Larsen
goldwing1@cox.net
478.971.4291

District Rider Educator

Chuck & Anne Reed
creedsegreenwing@msn.com
706.790.1626

Asst. Rider Educator

Danny & Janet Mackey
y2kwing@juno.com
770.345.6374

District Treasurer

Greg & Mickey Bailey
gregbailey@Charter.net

District Membership Enhancement

Bill & Betty Livingston
livingstonb@netzero.net
229.889.1705

District Motorist Awareness

Robert & Karla Greer
robertgreer@bellsouth.net

2005 District Couple of the Year/

Asst. District Trainers

Chris & Shannan Adams
adamsgae@bellsouth.net

Region A Director

Larry & Patti Lingo
lingwing@gte.net

GWRRRA GEORGIA

Volume 2, Issue 3

March, 2005

AHOY, MATIES!!

Since our last newsletter, Rhonda and I have been somewhat out-of-pocket. With medical problems and death on both sides of the family, we have not been able to visit you as much as we would have.

With winter almost gone and riding weather getting better by the day, we are looking forward to getting back on the road to all the Chapter events and meetings as possible. As you will see on page 5, we already have a long list of Chapter events on the calendar.

Saturday, Feb. 26th, the District staff got together to work on Wing Fling 2005. We had a productive, but long meeting and everyone left very excited about the Rally. Naturally, we have some new ideas along with some of the usual.

The concept of a Thursday night movie was well received last year (even though the movie was a bomb). So, this year we will again off the movie following the barbecue...but, it will be a first class movie! So remember to bring a chair and be prepared to be entertained.

We plan to have more seminars this year than in the past. I am sure you will find something of interest, but if you have a topic you would like to know more about, let us know and we'll see what we can do.

As most of you know by now, we will be giving away a 2005 Bushtec Turbo II trailer for our Grand Prize. Your District Directors and Assistant Directors will have tickets for the trailer if you want to buy some before the rally. You DO NOT have to be present at closing ceremonies to win.



Georgia has always had the best selection of door prizes for our Rally and that is due to the support we get from our Chapters, businesses, and individuals. It is asked that each Chapter give one or more door prizes valued at \$25 or give cash (check) and a nice door prize will be purchased and your Chapter's name will go on it. If the

Chapter is giving cash (check), please have it turned in to your ADD or the District Director by May 15, so we can purchase a door prize. We will put a label on each donated prize, or prize purchased with donate money to show who, which Chapter, or business donated the prize. If a business makes a donation, they can write it off as advertisement only.

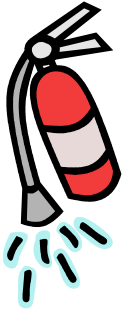
Many people think the only reason to go to a rally is for the vendors. Although Ron and Susan have a good variety of vendors lined up, and more are signing up all along, there is a lot more to a rally. There are seminars, games, rides, contests, food, fellowship, and much more. There is enough to keep you busy from opening to closing. I urge you to get involved. The more you are involved, the more fun you will have.

To put on such an event, we need help from the members at large. We truly appreciate the Chapters and individuals who volunteer to help a couple of hours during the Rally to help make Wing Fling the success it is. If you would like to help out, please contact Linda Feaselman at wingrider@gbonline.com or at 770.474.6834. It could be more rewarding than you think!



WHEN DID YOU LAST CHECK YOUR

Tires? Recently I trust. Battery? Ditto. First Aid Kit? OOPS! Forgot about that. Folks carry different type of First Aid kits. Some are small, some are larger. Some folks supplement their kits with extra items. For example, we carry distilled water (2 small bottles) to flush injured areas caused by cuts, bites, burns, road rash etc. Medical authorities will have to clean out cuts, etc, when salve or hydrogen peroxide or some other substance is used. Using sterile water will help clean out the injury and make it easier for the medical personnel to attend to the injury. We also carry CPR mouth-to-mouth barriers. These allow contact for CPR purposes without actual mouth to mouth contact. Gloves. Remember, some people are allergic to latex. Band aids. Has your first aid kit been in your bike for so long that maybe the band aid won't stick? Open one and check. Different sizes of gauze. 2x2' or 4x4's could be a big help. For the 4x4's we carry, we bought a cotton bed sheet and cut it into quarters. Makes a great sling for an injured arm or shoulder, and also makes a good item to use if you needed to tie a splint on an arm or leg. Take a minute and check your first aid kit for bad or outdated items.



How about a fire extinguisher, if you carry one. When was the last time you took it out of the box and looked at it. Is it out of date? Some are rechargeable, some are not. Which do you carry? How about flares or warning (strobe) lights. Some flares have expiration dates. Have you checked them lately? How about the batteries needed to operate a flashing light or strobe light. "A" batteries will loose their charge over a relative short period of time. Anything else you think you need to check, do so. You just never know when you may have to use it. (Never will I hope!)

One last thing. Check the Georgia web page, go to Rider Ed and look for the article on helmets concerning a study on the possible lose of vision and hearing while wearing one and click on it. I think you will be pleasantly surprised at the results of this survey.



And as always, always be watchful for the unwatchful

RSHF,

Chuck and Anne Reed

GA District Educators

Among our sick:

Gary Thayer

Tom Harvey

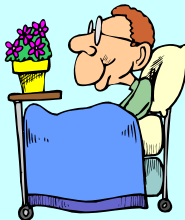
Anita Schmidt, GA-Q

Marcia Etzle, GA-E2

Barney Olson, GA-B

Brenda Jones, GA-C

Kathy Potter, GA-C



These are members that we knew of at press time.

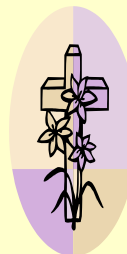
Christian Sympathy is extended to...

Tom & Ruth Harvey on the death of his sister.

Dennis & Delois Ogle on the death of her mother.

Smokey & Dana Keel on the death of her mother.

Rick & Rhonda Stephens on the death of her nephew.



FUN ACTIVITIES GUIDE AVAILABLE



In this article we would like to provide you with some useful information to improve GWRRA Chapter life. Have you ever wondered what you could do to make Chapter gatherings more fun? There is a section on the website that just might have something you can use. There is a Fun Activities Guide with 65 pages of games, rides, and many other activities that makes your gatherings and events fun and exciting. It might be just what you have been looking for to add that “spark” that ignites enthusiasm in those members that just don’t seem to be getting all there is to enjoy from the Chapter life.

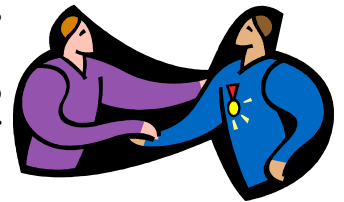
What can you do for that new couple that visits your Chapter gathering for the first time? Is there anything that you could give them to explain the benefits and rewards from being a member of our wonderful organization? Well, just for that purpose, there is a 10 page New Member Guide that explains the history of GWRRA, benefits of membership, the structure of GWRRA, what all those pins and patches are for, and information about our District Rally. We always carry this guide with us and offer it to anyone that is interested in motorcycles.



Did you ever wonder what happened to that couple that came to a few Chapter gatherings then just quit participating? There is a Retention Guide that goes into great depth about how to keep those members you worked so hard to recruit. It explains many reasons members quit participating, and it also gives you some great ideas on how to keep them active. Think back to when you first joined GWRRA. What was it that convinced you this is exactly what you were looking for in a social organization? We have so many things to offer that any new member would certainly find something they enjoy doing. Was the way all Chapters and the District Staff welcomed you like part of the family that convinced you to renew your membership? This guide provides an outstanding source of information for retaining members.



Have you ever wondered what you could do to recruit new members in your Chapter? How about having a Mall Show? There is a Mall Show guide that explains in great detail what a Mall Show is and how to organize the show. It is an excellent opportunity to show off our bikes and let the public know about our Chapter life-style. What better way is there to show off your bike and meet potential members?



The entire District Staff and Betty and I are always available to answer any questions you may have concerning any of these topics. So check out the web site and start the fun and excitement in your own Chapter. Visit the Membership Enhancement Division website at <http://www.gwrra.org/regional/med/index.html> and learn more about the following tips.

Bill and Betty Livingston

Georgia District Membership Enhancement

Couple Of the Year Coordinators

Have you ever been to Magnolia Springs, Kolomoki Mounds or Watson Mill Bridge? How about Wormsloe, Hofwyl-Broadfield Plantation or Stephen C. Foster State Park? All of these and more you can check out at www.gastateparks.org

GRAND PRIZE FOR '05 WING FLING

Bushtec Turbo+II Motorcycle Trailer with lots of accessories.



Tickets may be purchased with your rally registration or from the District Director and Asst. District Directors. You do not have to be present at closing to win.

Motorist Awareness Division (MAD)

I am sure that every single person reading this article would like to make the roads a safer place for everyone. This is the one of the primary focuses of the MAD program – “To increase motorists’ awareness of motorcycles and motorcyclists.”

So far, four Georgia chapters have appointed Motorist Awareness (MA) Coordinators and they are already making a difference. We are excited and anxiously awaiting to add more MA Coordinators to this list.

Georgia Chapter A	McDonough	Bob & Bonnie McCroskey
Georgia Chapter B-2	Douglasville	Debra Ogle
Georgia Chapter C	Brunswick	Lou & Patti Card
Georgia Chapter P	Fayetteville	Keith & Sharon Burkingstock

Lou and Patti Card have been making arrangements for a bike show and plan on passing out MA materials at the GWRRA coffee breaks on I-75 during Daytona Bike Week.

Keith and Sharon Burkingstock have already given two community talks reaching out to some 65 people.

Take a look at the Motorist Awareness Division (MAD) link on the GWRRA Georgia Home

2005 GA CHAPTER COUPLES OF THE YEAR

Brian & Cindy Allen, GA-A
 Al & Frances Starley, GA-A2
 Walt & Bev Thayer, GA-B2
 Ray & Kathy Potter, GA-C
 Rich & Sally Curtis, GA-G
 Kary & Pat Porter, GA-H
 George & Jan Danner, GA-J
 Robert & Anna Tillman, GA-O



HORIZONS PROGRAM SET FOR MARCH 5-6

GWRRA's Fun Packed, Informational, Training Program is set for Saturday, March 5, and Sunday, March 6, at the Jameson Inn in Thomaston on Hwy 19 North. Twenty-seven people have registered to participate in all the activities offered to learn more about the overall operations of GWRRA. This is NOT your ordinary training session. You have to participate to believe it and everyone comes away with a better understanding of how to make everything more fun. For info. on how you can attend a Horizons, contact Gary & Linda Feaselman at wingrider@gbronline.com or 770.474.6834.

UPCOMING EVENTS

March 11-12—Irish Get-a-way in Dublin. Civitan Club Fairgrounds on Hwy 257. No registration fee & no camping fee. For more info contact CD Melody Watson at (478) 984-4869 or jmwatson@nlamerica.com. **The Traveler's Plaque will be given away at this event! Gather your leprechauns and come and get it!**



March 19—GA-H2's Poker Run for Relay for Life. Statesboro Mall. First bike out at 10 a.m. Last bike out at 12:30 p.m. First place \$125, second place \$75. One hand \$15, two hands \$20. For more info. Contact CD Linwood McNure at (912) 587.9794.

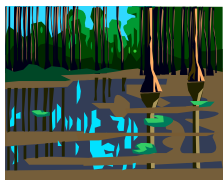
March 17-19—Florida District Rally, Kissimmee, Florida.

March 26—A Cherry Blossom Event, GA-X, 10—12:30 at Ryan's on Hwy 80. no fee, no food served until 11 a.m. Tours start at 12 p.m. For more info contact CD John Zimmer at (478) 953-2529.



March 31—April 2—Alabama District Rally, Mobile, AL

April 8-9—GA-V's First Annual Wings Over Gum Swamp Extravaganza, Cochran/Bleckley Recreation Dept., Hwy 26W, Cochran. Camping/Motorhome hookups available. For more info contact CD Angie Parkerson at (478) 934-0584.



April 16—GA-T's Spring Fling. Sandy Creek State Park, Hwy 441N, Clarke County. 10 a.m.—2 p.m. No registration fee. Contact CD Randy Simpson at (706) 546-5202.

April 30—GA-D Rummage Sale. Chestatee Community Building. For more info contact CD Sherrel Davis at 770-887-7938

May 7—GA-D2 Fun Day, North Georgia Fairgrounds, Dalton. For more info contact CD Frank Cronan at (706) 277-1298.

May 5-7—South Carolina District Rally, Myrtle Beach

June 16-18—Georgia District Wing Fling, Lake Chatuge Lodge, Georgia Mtn. Fairgrounds, Hiawassee. Registration opens at 12 noon. Must have a registration number to book at the host Lodge. Check website www.gwrra-ga.com for rally info or contact Rick Stephens at 770.562.3277. Vendors contact Ron Larsen at 478.971.4291.



August 13—GA-H Fun Day, Albany Exchange Club Fairgrounds, 9:30—3:00, closing ceremonies 2 p.m. \$6 per person pre-registration, \$6.50 on site includes meal and 1 grand prize ticket. Contact CD Ken Stutely at 229.888.1341 for more info.

August 20—GA-C Fun Day, on Jekyll Island. Holiday Inn Beach Resort Registration is \$8 per person, \$10 after July 15. Meal, \$200 grand prize, treasure hunt, and games. For more info. Contact CD Buddy Jones at 912.264.0001



Sept. 5—GA-K Poker Run/Catfish Festival in Kingsland. \$10 registration fee. For more info. Contact CD Joe Yother at 912.729.6379

Sept. 17—GA-Q Dessert Auction and Burger Burn at the Museum of Aviation, Warner Robins. Fun starts at 11 a.m. For more info contact CD Dave Aikens at 478.953.4886



Sept. 24—GA-O Picnic in the Park, Fulwood Park, Tifton. More info to follow.

Oct. 22—GA-A Fall Harvest Fun Day, High Falls State Park, \$8 per person. For more info contact CD Bob Greer at (770) 473-1316.

Your Chapter event is not sanctioned by GWRRA without District approval. To confirm a date for your event, call Rick and Rhonda for verbal approval.

Once your date is approved, send your activity request form and event flyer to the District Director. If there are any changes or revisions, these requests should also be directed to the District Director.

A Chapter may not appear on the annual event schedule more than once at any one time. Chapters desiring to host more than one event in a year must wait until the first even has happened before requesting a second date.

GWRRRA GA

460 Taylors Gin Road
Temple, GA 30179

770.562.3277

Friends for Fun, Safety, and Knowledge



2005 Georgia Wing Fling A Pirate's Adventure

Set your sails for Hiawassee
for June 16—18



Gwrrra-ga.com